

Base strip - MC 1.5/ 5-G-3.5-THT - 1937525

Please be informed that the data shown in this PDF Document is generated from our Online Catalog. Please find the complete data in the user's documentation. Our General Terms of Use for Downloads are valid (<http://download.phoenixcontact.com>)

Header, Nominal current: 8 A, Rated voltage (III/2): 160 V, Number of positions: 5, Pitch: 3.5 mm, Color: Black, Contact surface: Tin, Assembly: SMD/THT/THR, User information and design recommendations on through hole reflow technology can be found at: <http://www.combicon.com>



The figure shows a 10-position version of the product

Why buy this product

- Plug-in direction parallel to the PCB
- 3.5 mm pitch
- Low-profile THR headers with a compact pitch
- Delivery form: box packaging, in bulk for small series
- Delivery form: tape-on-reel packing according to IEC 60286-3 for automated mounting
- Use in SMT reflow processes



Key commercial data

| | |
|------------------------|---|
| Packing unit | 1 |
| Minimum order quantity | 50 |
| Catalog page | Page 196 (CC-2011) |
| GTIN |  4 017918 895143 |
| Custom tariff number | 85366990 |
| Country of origin | GERMANY |

Technical data

Dimensions / positions

| | |
|---------------------|--------------|
| Length | 9.2 mm |
| Pitch | 3.5 mm |
| Dimension a | 14 mm |
| Number of positions | 5 |
| Pin dimensions | 0,8 x 0,8 mm |
| Hole diameter | 1.4 mm |

Technical data

| | |
|-------------------|-----------------|
| Range of articles | MC 1,5/...G-THT |
|-------------------|-----------------|

Base strip - MC 1.5/ 5-G-3.5-THT - 1937525

Technical data

Technical data

| | |
|---|--------------------|
| Insulating material group | IIIa |
| Rated surge voltage (III/3) | 2.5 kV |
| Rated surge voltage (III/2) | 2.5 kV |
| Rated surge voltage (II/2) | 2.5 kV |
| Rated voltage (III/2) | 160 V |
| Rated voltage (II/2) | 250 V |
| Connection in acc. with standard | EN-VDE |
| Nominal current I _N | 8 A |
| Nominal voltage U _N | 160 V |
| Maximum load current | 8 A (per position) |
| Insulating material | PA-GF |
| Inflammability class according to UL 94 | V0 |
| Color | Black |
| Nominal voltage, UL/CUL Use Group B | 300 V |
| Nominal current, UL/CUL Use Group B | 8 A |
| Nominal voltage, UL/CUL Use Group D | 300 V |
| Nominal current, UL/CUL Use Group D | 8 A |

Classifications

eclass

| | |
|------------|----------|
| eCl@ss 4.0 | 272607xx |
| eCl@ss 4.1 | 27260701 |
| eCl@ss 5.0 | 27260701 |
| eCl@ss 5.1 | 27260701 |
| eCl@ss 6.0 | 27260704 |
| eCl@ss 7.0 | 27440402 |

etim

| | |
|----------|----------|
| ETIM 3.0 | EC001121 |
| ETIM 4.0 | EC002637 |
| ETIM 5.0 | EC002637 |

unspsc

| | |
|---------------|----------|
| UNSPSC 6.01 | 30211810 |
| UNSPSC 7.0901 | 39121409 |
| UNSPSC 11 | 39121409 |
| UNSPSC 12.01 | 39121409 |
| UNSPSC 13.2 | 39121409 |

Approvals

Approvals

Base strip - MC 1.5/ 5-G-3.5-THT - 1937525

Approvals


Approvals

VDE report with production monitoring / GOST / IECCEB Scheme / UL Recognized / cUL Recognized / GOST / cULus Recognized

Ex Approvals


Approvals submitted


Approval details

| | |
|---|-------|
| VDE report with production monitoring  | |
| Nominal current I _N | 8 A |
| Nominal voltage U _N | 160 V |

| |
|--|
| GOST  |
|--|

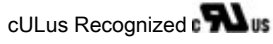
| | |
|--------------------------------|-------|
| IECCEB Scheme | |
| Nominal current I _N | 8 A |
| Nominal voltage U _N | 160 V |

| | | |
|---|-------|-------|
| UL Recognized  | | |
| | B | D |
| Nominal current I _N | 8 A | 8 A |
| Nominal voltage U _N | 300 V | 300 V |

| | | |
|--|-------|-------|
| cUL Recognized  | | |
| | B | D |
| Nominal current I _N | 8 A | 8 A |
| Nominal voltage U _N | 300 V | 300 V |

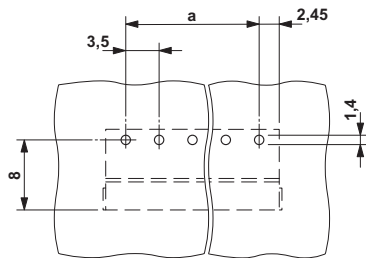
Base strip - MC 1.5/ 5-G-3.5-THT - 1937525

Approvals

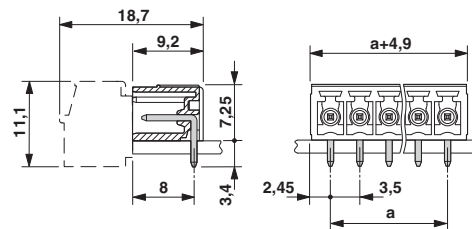


Drawings

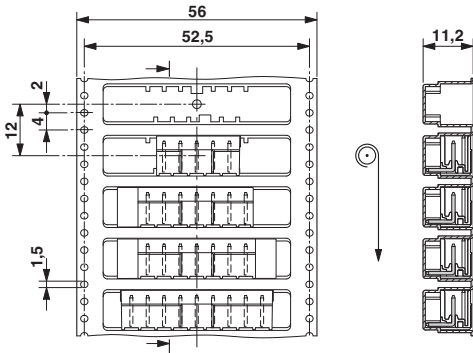
Drilling diagram



Dimensioned drawing

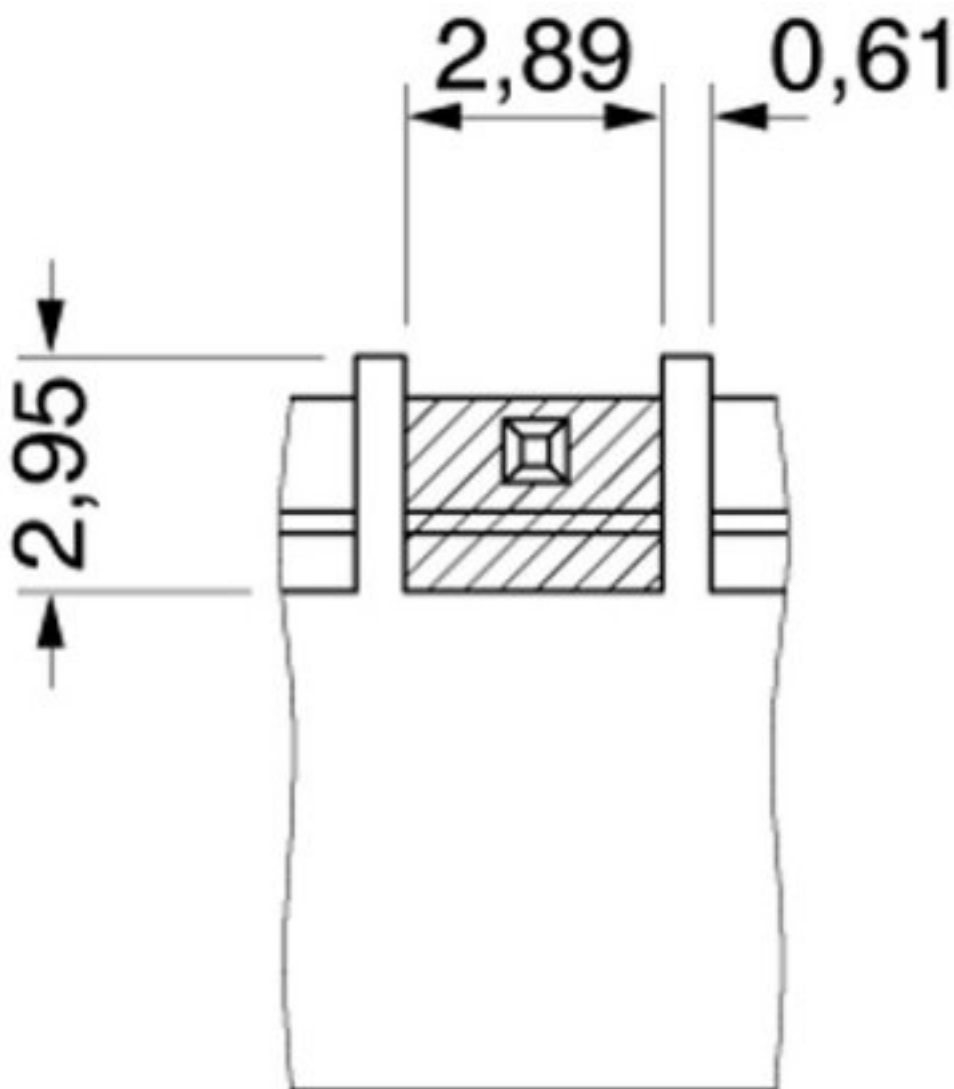


Dimensioned drawing



Base strip - MC 1.5/ 5-G-3.5-THT - 1937525

Dimensioned drawing



Bottom view, free space for solder paste, 0.3 mm deep