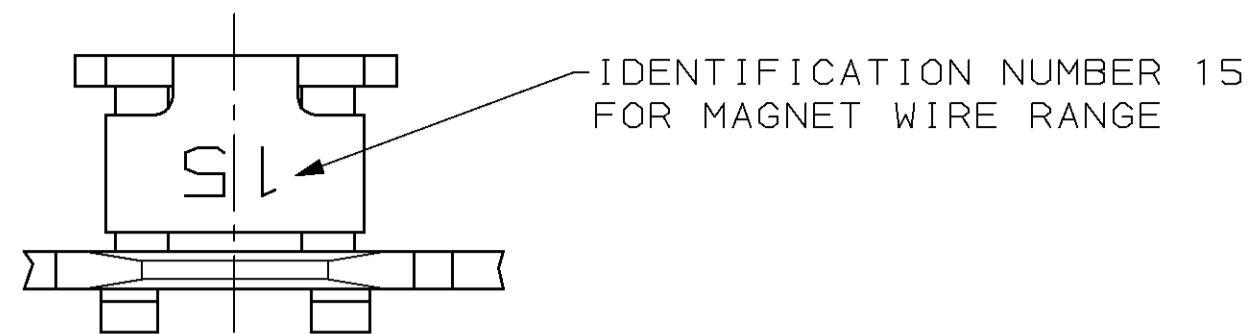
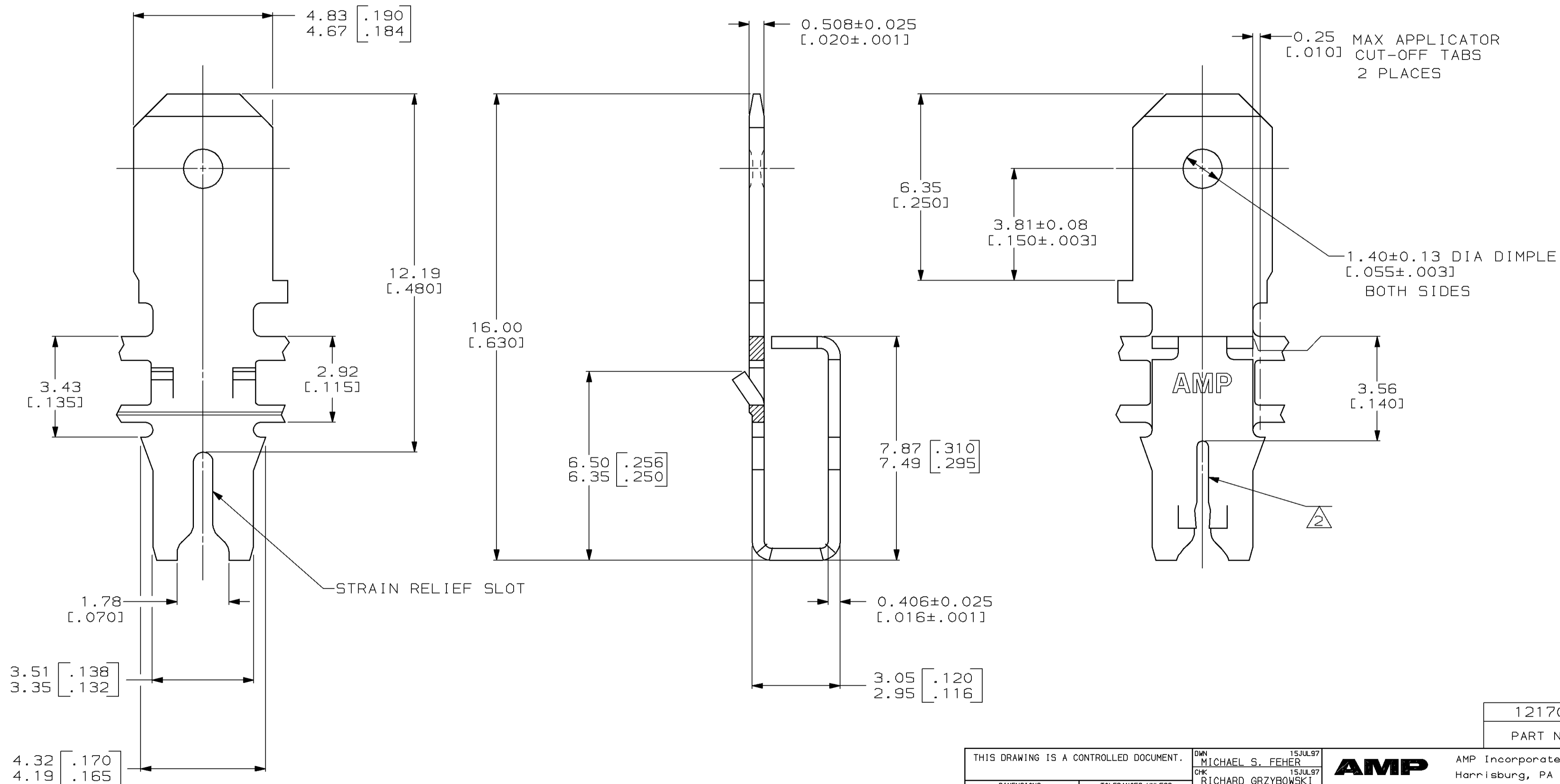


THIS DRAWING IS UNPUBLISHED. RELEASED FOR PUBLICATION, 19
 © COPYRIGHT 19 BY AMP INCORPORATED. ALL RIGHTS RESERVED.

| LOC | | DIST | | REVISIONS | | | |
|-----|-----|-----------------------------|--|-----------|-----|------|--|
| P | LTR | DESCRIPTION | | DATE | DWN | APVD | |
| | C | REVISE PER ECN 061A-0201-98 | | 20JUL98 | SU | KR | |



- 1 CONTINUOUS STRIP ON REELS (SPLICE FREE) WITH TERMINALS LOCATED ON 5.59±0.08 [.220±.003] CENTERS.
- 2 SLOT TERMINATES A SINGLE MAGNET WIRE ONLY. COPPER RANGE: 0.54-0.81mm [#23.5-#20] AWG.



1217004-1
PART NUMBER

| | | | | |
|--|--|--------------------------------------|---|--------------------|
| THIS DRAWING IS A CONTROLLED DOCUMENT. | | DWN MICHAEL S. FEHER 15JUL97 | AMP Incorporated Harrisburg, PA 17105-3608 | |
| DIMENSIONS: mm [INCHES] | | CHK RICHARD GRZYBOWSKI 15JUL97 | AMP | |
| TOLERANCES UNLESS OTHERWISE SPECIFIED: | | APVD KURT RANDOLPH 15JUL97 | NAME TERMINAL, TAB, 4.75 [.187] FASTON™, MAG-MATE™ | |
| 0 PLC ±- | 1 PLC ±- | PRODUCT SPEC 108-2012 | SIZE A2 | CAGE CODE 00779 |
| 2 PLC ±0.25 [.010] | 3 PLC ±- | APPLICATION SPEC 114-2067 | DRAWING NO C=1217004 | RESTRICTED TO - |
| 4 PLC ±- | ANGLES ±- | WEIGHT - | SCALE 10:1 | SHEET 1 OF 1 |
| MATERIAL 4M PRE-MILLED BRASS | FINISH 0.002032 [.000080] MIN TIN PER MIL-T-10727 | CUSTOMER DRAWING | | REV C |

1217004