

# EMC Components

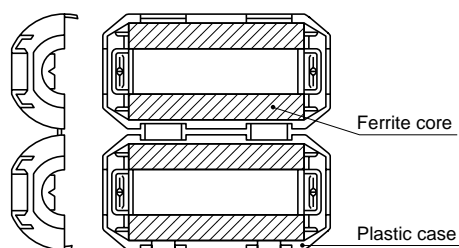
## Clamp Filters For Cable

## ZCAT Series

### FEATURES

- Unique plastic case ensures simple, convenient installation and includes a self-holding mechanism to prevent slippage on cables.
- Ferrite core provides excellent absorption of high-frequency EMC.
- Highly effective as countermeasure against common mode EMC without adverse effect on signal quality.
- Large core size prevents saturation during large signal surges.

### INTERNAL CONSTRUCTION



### APPLICATIONS

Personal computers, word processors, monitors, hard disk drives, digital telephones, audio devices, electronic musical instruments, video games, copiers and facsimiles.

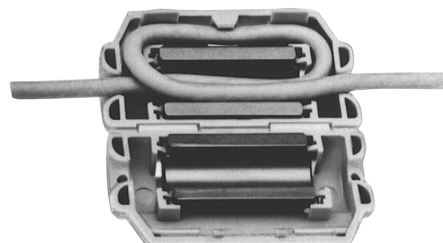
### PRODUCT IDENTIFICATION

ZCAT 24 36 - 13 30 A - M - BK  
(1) (2) (3) (4) (5) (6) (7) (8)

- (1) Series name  
 (2) Outer dimensions(mm)  
 (3) Length(mm)  
 (4) Inner dimensions(mm)  
 (5) Material code  
 (6) Fixed type code  
 A: Cable fixed  
     Hold the cable to secure it with the main body  
 AP:Cable fixed  
     (with lock mechanism)  
 B: Clamp fixed  
 C: Cable coil securing type  
     (Coil the cable one time within the case to fix it/with lock mechanism.)  
 D: Flat cable type  
 DT: Flat cable type (Hold with adhesive pad.)  
 Non code: Band fixed  
     (Secure the cable and main body with the nylon belt.)  
 (7) TDK internal code  
 M:Standard type  
 Non code: High impedance type  
 (8) Outer color code  
 BK: Black  
 Non code: Gray



### ZCAT-C TYPE



### PACKAGING STYLE AND QUANTITIES

Part No.	Quantity
ZCAT3035	140 pieces/box
ZCAT2017-B	350 pieces/box
ZCAT2235	350 pieces/box
ZCAT2436	350 pieces/box
ZCAT2032	400 pieces/box
ZCAT2035	400 pieces/box
ZCAT2132	400 pieces/box
ZCAT2749	400 pieces/box
ZCAT1730	500 pieces/box
ZCAT2017	800 pieces/box
ZCAT1325	900 pieces/box
ZCAT1518	900 pieces/box
ZCAT1525	900 pieces/box
ZCAT4625-D	240 pieces/box
ZCAT6819-D	160 pieces/box

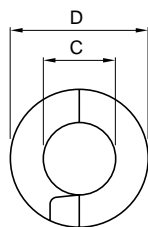
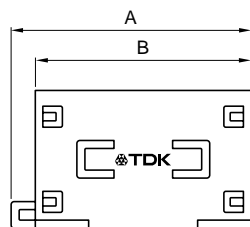
# EMC Components

## ZCAT Series

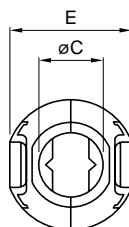
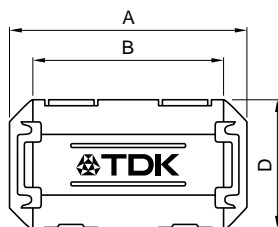
### Clamp Filters For Cable

#### SHAPES AND DIMENSIONS

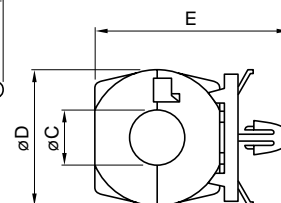
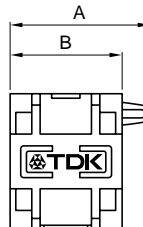
##### ZCAT TYPE



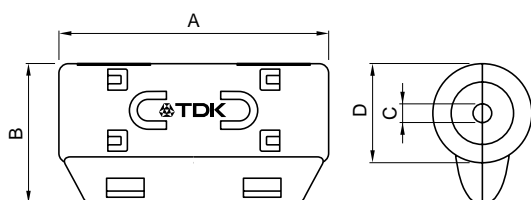
##### ZCAT-A, ZCAT-AP TYPE



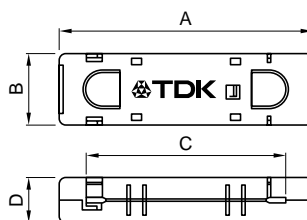
##### ZCAT-B TYPE



##### ZCAT-C TYPE



##### ZCAT-D TYPE



Applicable cable thickness:  
1.3mm max.

Dimensions in mm

Part No.	A	B	øC	øD	E	Applicable cable outer dia.	Weight(g)	Impedance freq. characteristics Fig.
ZCAT1518-0730-M(-BK)*1	22±1	18±1	7±1	15±1	–	7max.	6	1
ZCAT1518-0730(BK)*2	22±1	18±1	7±1	15±1	–	7max.	6	2
ZCAT2017-0930-M(-BK)	21±1	17±1	9±1	20±1	–	9max.	11	3
ZCAT2032-0930-M(-BK)*1	36±1	32±1	9±1	19.5±1	–	9max.	22	4
ZCAT2032-0930(-BK)*2	36±1	32±1	9±1	19.5±1	–	9max.	22	5
ZCAT2132-1130-M(-BK)*1	36±1	32±1	11±1	20.5±1	–	11max.	22	6
ZCAT2132-1130(-BK)*2	36±1	32±1	11±1	20.5±1	–	11max.	22	7
ZCAT3035-1330-M(-BK)*1	39±1	34±1	13±1	30±1	–	13max.	63	8
ZCAT3035-1330(-BK)*2	39±1	34±1	13±1	30±1	–	13max.	63	9
ZCAT1525-0430AP-M(-BK)	25±1	20±1	4±1	15±1	11.5±1	2.5 to 4(USB)	7	6
ZCAT1325-0530A-M(-BK)*1	25±1	20±1	5±1	12.8±1	11.2±1	3 to 5(USB)	7	6
ZCAT1325-0530A(-BK)	25±1	20±1	5±1	12.8±1	11.2±1	3 to 5(USB)	7	7
ZCAT1730-0730A-M(-BK)	30±1	23±1	7±1	16.5±1	15±1	4 to 7(USB/IEEE1394)	12	6
ZCAT2035-0930A-M(-BK)*1	35±1	28±1	9±1	19.5±1	17.4±1	6 to 9	22	4
ZCAT2035-0930A(-BK)	35±1	28±1	9±1	19.5±1	17.4±1	6 to 9	22	5
ZCAT2235-1030A-M(-BK)	35±1	28±1	10±1	21.5±1	20±1	8 to 10	27	4
ZCAT2436-1330A-M(-BK)	36±1	29±1	13±1	23.5±1	22±1	10 to 13	29	10
ZCAT2017-0930B-M(-BK)	21±1	17±1	9±1	20±1	28.5±1	9max.	12	3
ZCAT2749-0430C-M(-BK)	49±1	27±1	4.5±1	19.5±1	–	4.5max.	26	11
ZCAT4625-3430D(-BK)	45.5±1	24.5±1	34±1	12±1	–	For 26 wires flat cable	32	12
ZCAT4625-3430DT(-BK)*3	45.5±1	24.5±1	34±1	13±1	–	For 26 wires flat cable	32	12
ZCAT6819-5230D(-BK)	67.5±1	18.5±1	52±1	16±1	–	For 40 wires flat cable	58	12
ZCAT6819-5230DT(-BK)*3	67.5±1	18.5±1	52±1	17±1	–	For 40 wires flat cable	58	12

\*1 Set M marking on product.

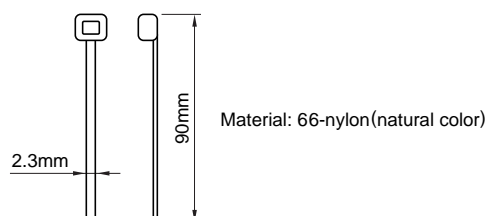
\*2 These products are delivered with fixed band.

\*3 ZCAT-DT type: Adapted for flat cables and hold with adhesive pad.

• ZCAT-B type: Clamp fixed type installation hole diameter ø4.8 to 4.9mm, thickness of board 0.5 to 2mm.

• ZCAT-AP, ZCAT-C type: Once closed, the case will not be easily opened manually.

#### STRUCTURE OF THE MOUNTING BAND



△ Specifications which provide more details for the proper and safe use of the described product are available upon request.  
All specifications are subject to change without notice.

# EMC Components

## Clamp Filters For Cable

## ZCAT Series

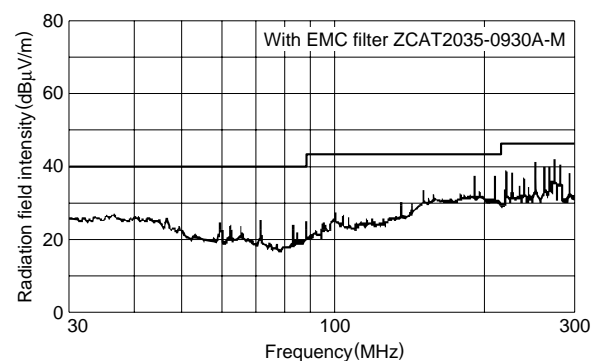
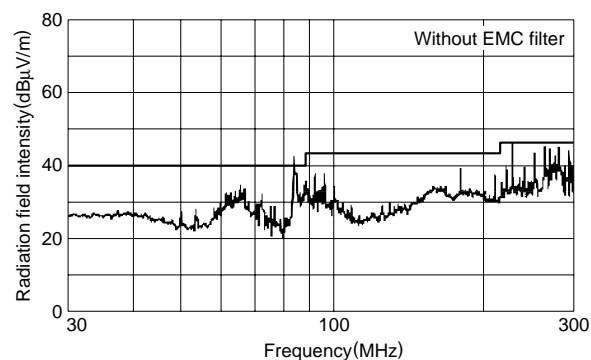
### ELECTRICAL CHARACTERISTICS

Part No.	Impedance ( $\Omega$ )min.[50 to 500MHz]
ZCAT1518-0730-M	35
ZCAT2017-0930-M	35
ZCAT2032-0930-M	80
ZCAT2132-1130-M	50
ZCAT3035-1330-M	100
ZCAT1525-0430AP-M	50
ZCAT1325-0530A-M	50
ZCAT1730-0730A-M	50
ZCAT2035-0930A-M	80
ZCAT2235-1030A-M	80
ZCAT2436-1330A-M	50
ZCAT2017-0930B-M	35
ZCAT2749-0430C-M	80
ZCAT4625-3430D(T)	35
ZCAT6819-5230D(T)	35

- Test conditions: R-X meter at unloaded condition,  $\phi$ 1mm solder plated copper wire passes through.

### TYPICAL EMC SUPPRESSION EFFECTS

#### RADIATION LEVEL vs. FREQUENCY CHARACTERISTICS



### TYPICAL ELECTRICAL CHARACTERISTICS

#### IMPEDANCE vs. FREQUENCY CHARACTERISTICS

##### ZCAT1518-0730-M

##### ZCAT1518-0730

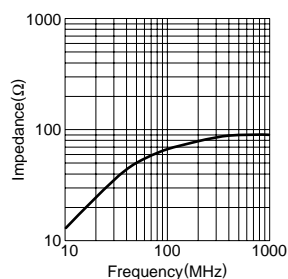


Fig.1

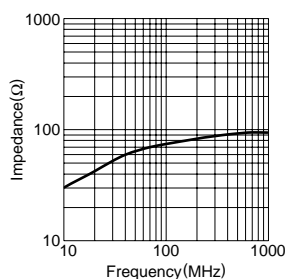


Fig.2

##### ZCAT2017-0930-M

##### ZCAT2017-0930B-M

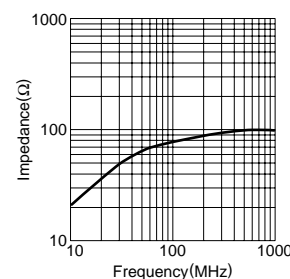


Fig.3

##### ZCAT2032-0930-M

##### ZCAT2035-0930A-M

##### ZCAT2235-1030A-M

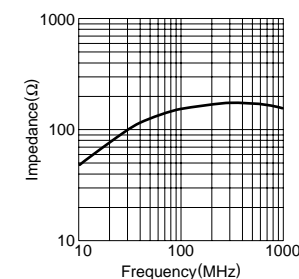


Fig.4

##### ZCAT2032-0930 ZCAT2035-0930A

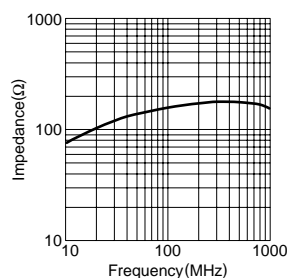


Fig.5

##### ZCAT2132-1130-M ZCAT1325-0530A-M ZCAT1525-0430AP-M ZCAT1730-0730A-M

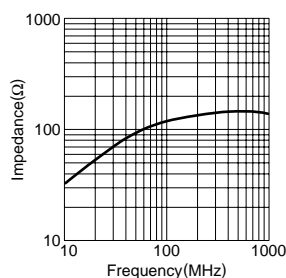


Fig.6

##### ZCAT2132-1130 ZCAT1325-0530A

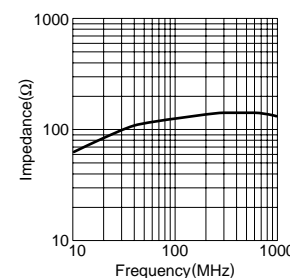


Fig.7

##### ZCAT3035-1330-M

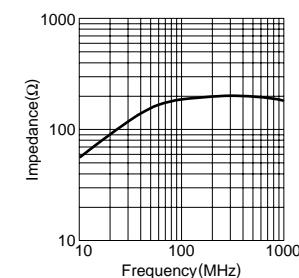


Fig.8

# EMC Components

Clamp Filters  
For Cable

## ZCAT Series

### TYPICAL ELECTRICAL CHARACTERISTICS

#### IMPEDANCE vs. FREQUENCY CHARACTERISTICS

ZCAT3035-1330

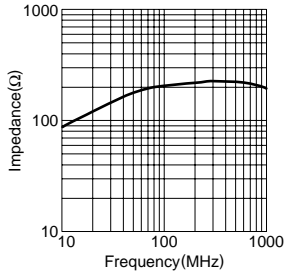


Fig.9

ZCAT2436-1330A-M

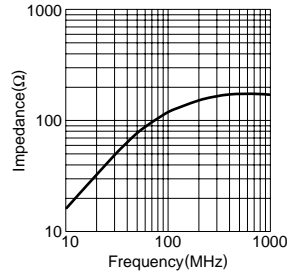


Fig.10

ZCAT2749-0430C-M(2TS)

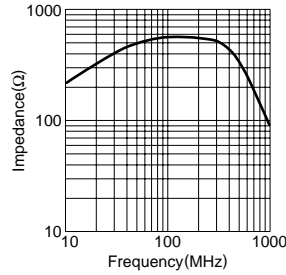


Fig.11

ZCAT4625-3430D  
ZCAT6819-5230D

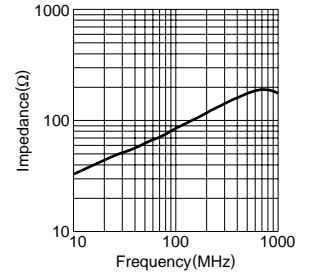


Fig.12